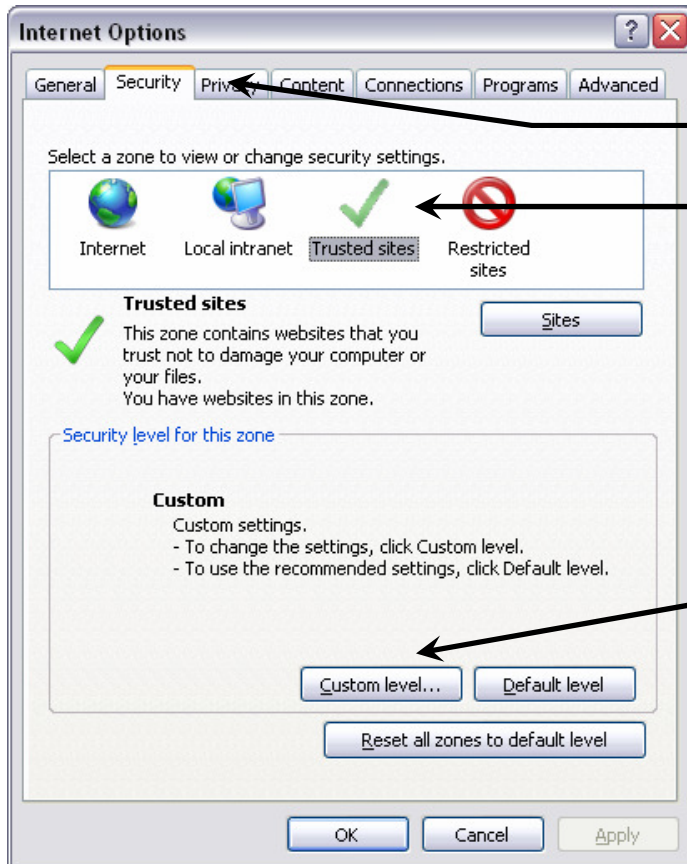


Peach Online V5 Setup for Workstations

THESE INSTRUCTIONS ARE DESIGNED TO ALLOW PEACH ONLINE TO WORK ON ALL WORKSTATIONS. TO START, OPEN UP:
INTERNET EXPLORER → TOOLS → INTERNET OPTIONS...



Step 1

**GO TO SECURITY TAB
THEN CLICK ON
TRUSTED SITES**

Step 2

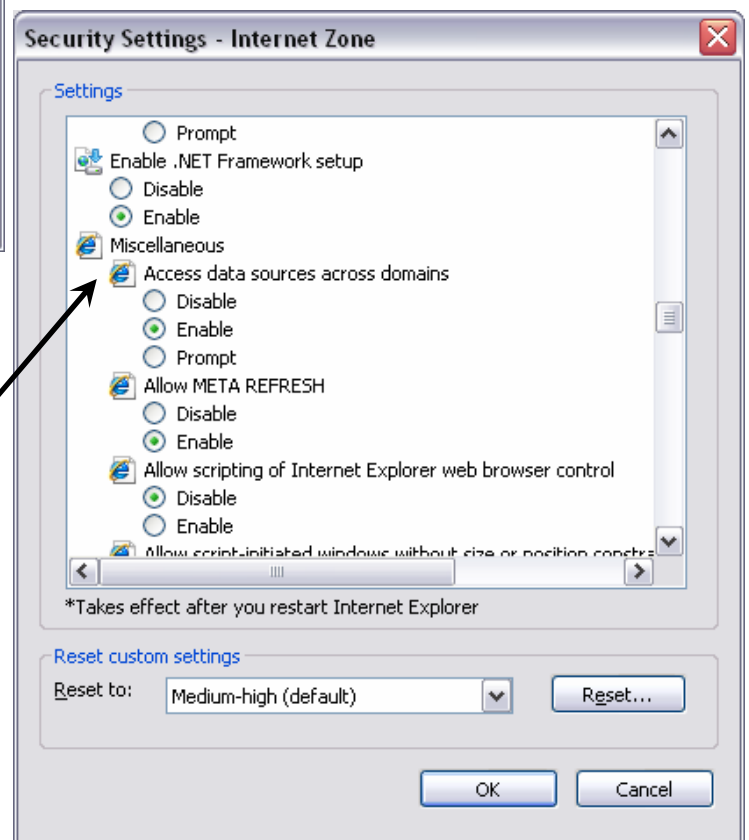
**CLICK ON THE
CUSTOM LEVEL.**

Step 3

**ONCE THIS SCREEN OPENS,
SCROLL DOWN HALF WAY TO
THE 'MISCELLANEOUS'
SECTION AND FIND:**

**'ACCESS DATA SOURCES
ACROSS DOMAINS'
ENABLE THIS OPTION.**

**CLICK ON OK AND EXIT TO
PREVIOUS SCREEN.**



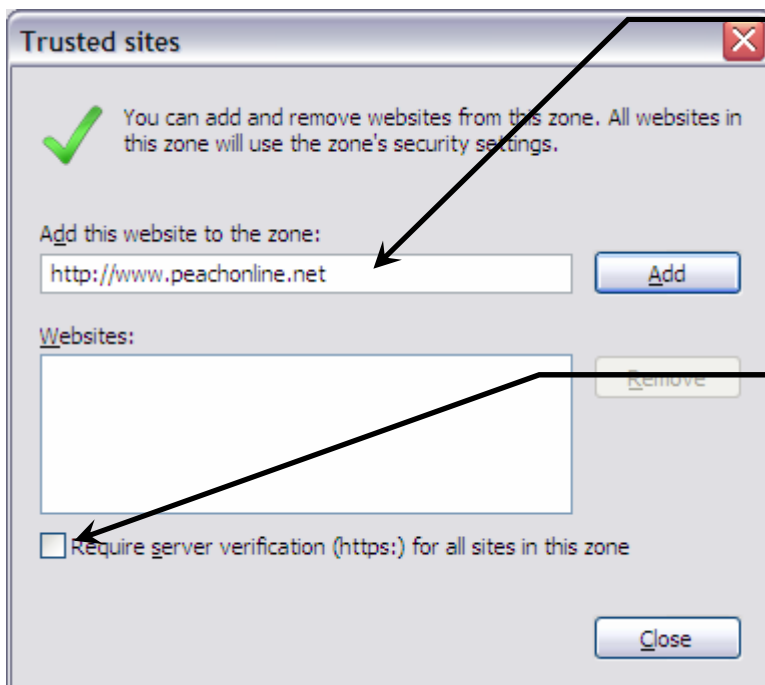


Step 4

CLICK ON TRUSTED SITES

Step 5

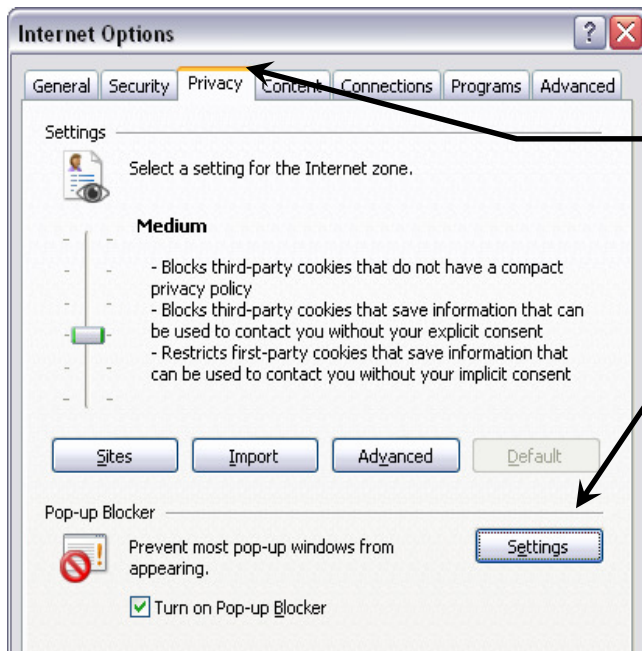
THEN CLICK ON SITES



Step 6

TYPE IN:
<http://www.peachonline.net>

UN TICK THIS OPTION AND THEN CLICK ON ADD AND CLOSE SCREEN

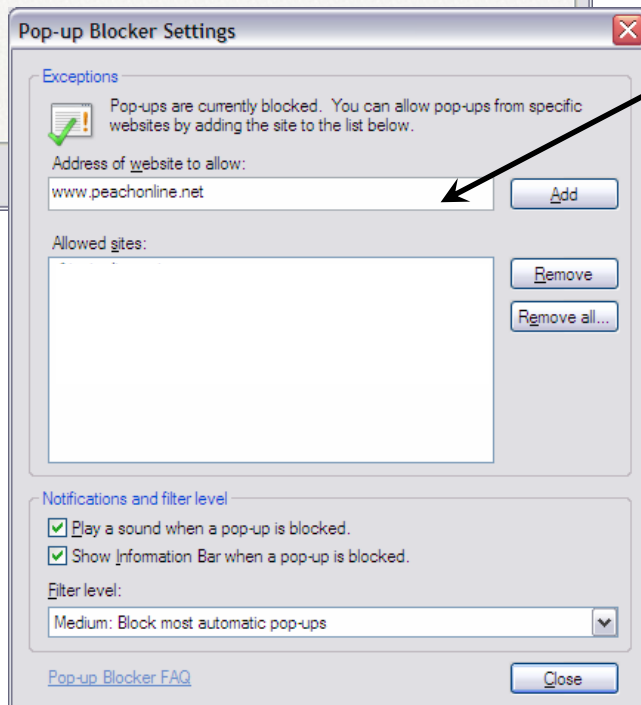


Step 8

CLICK ON THE PRIVACY TAB

Step 9

THEN CLICK ON THE SETTINGS BUTTON



Step 10

TYPE IN:

www.peachonline.net

AND THEN CLICK ON ADD AND CLOSE SCREEN

ONCE THAT IS DONE, GO TO : DESKTOP → RIGHT CLICK → NEW → SHORTCUT

TYPE IN: <http://peachonline.net/v5/Start.aspx>

Click next, Name the shortcut and finish.



If you have any questions during any part of this process, please call Peach Support on (02) 9630 - 2999