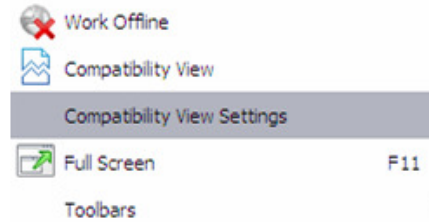
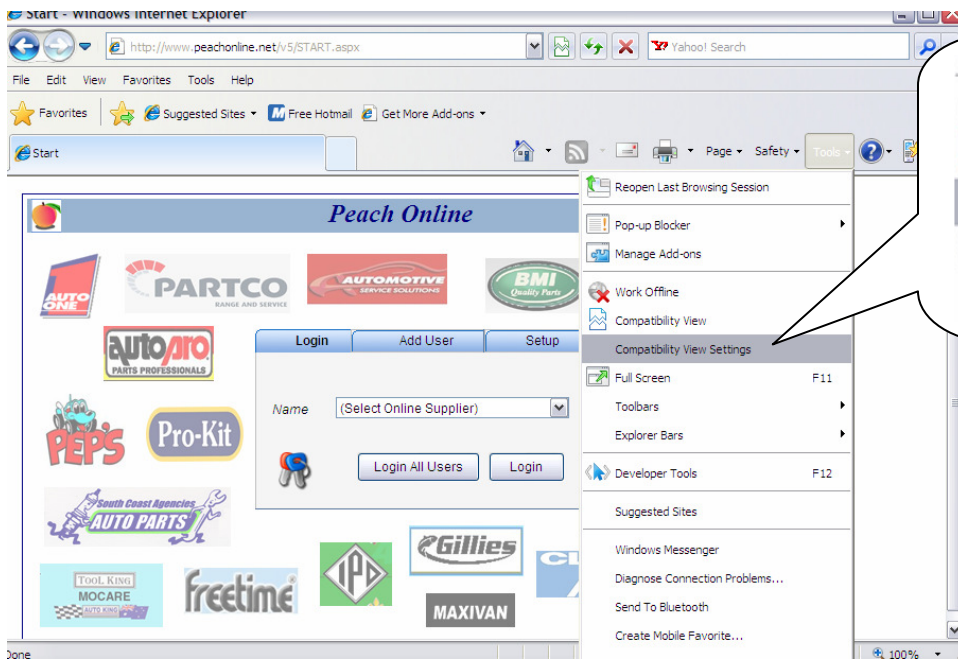
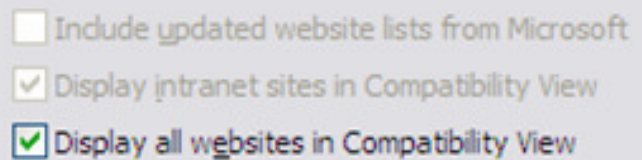
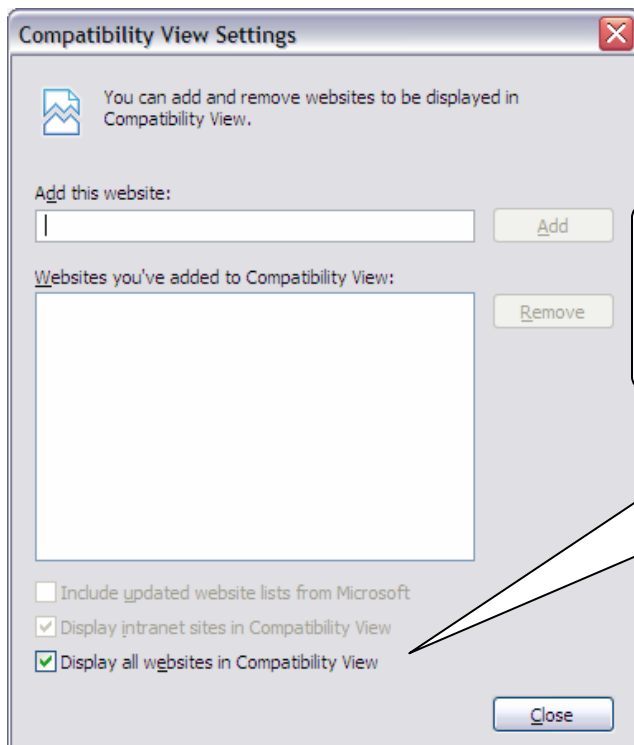


Peach Online Configuration for Internet Explorer 8

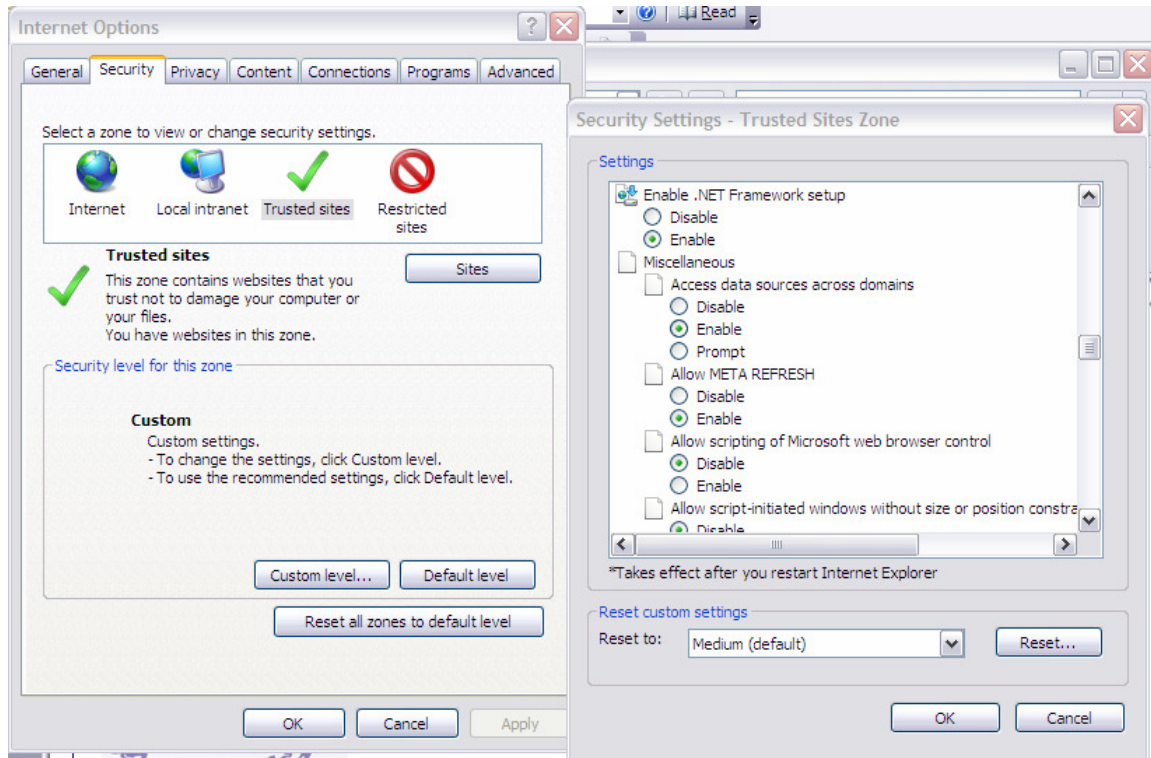
Step 1 - Click on Tools → Compatibility View Settings



Step 2 - Tick - "Display all Websites in Compatibility View"



Step 3 - During the Upgrade to IE8 – the initial configuration settings may have been disabled –
(Tools → Internet Options → Security Tab →
Click on “Trusted Sites”, Then Click on “Custom Level”)
So Enable: “Access Data sources across Domains”



If you have any Questions during any part of this process,
please call Peach Support on
(02) 9630 – 2999

Have you visited our NEW Peach Forum?

<http://peachinfo.net/default.asp>

Sign Up for Free and join the Peach Network....Online....!